

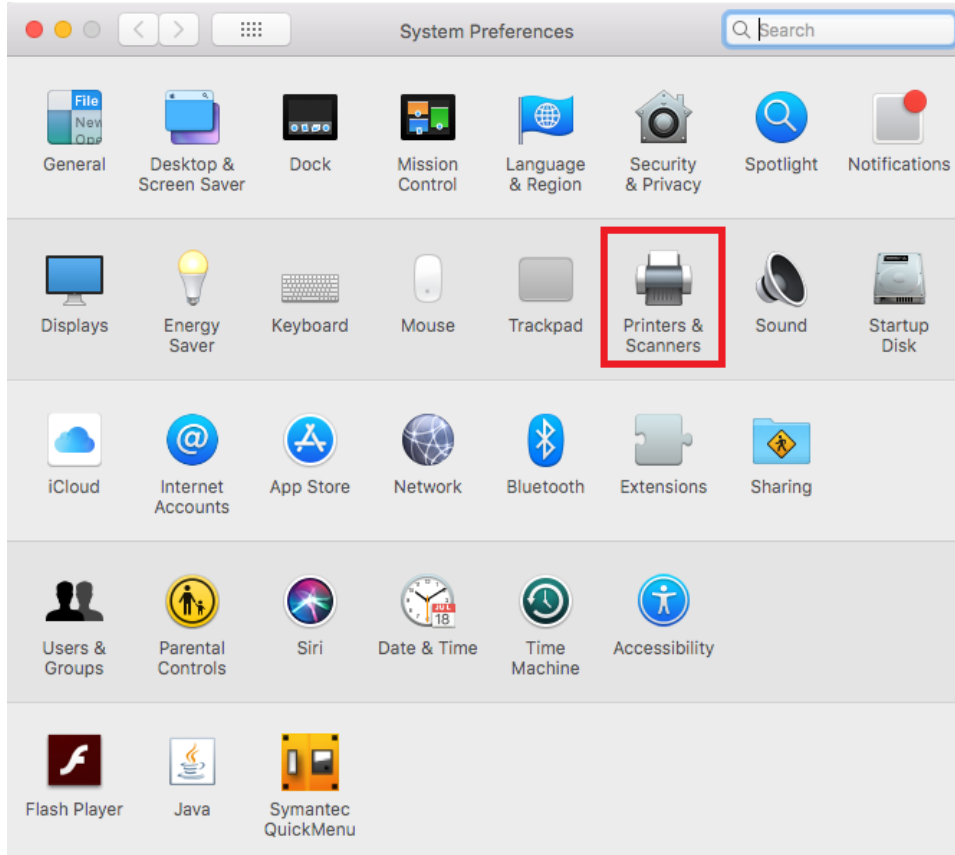
### Adding a network printer (Mac):

You will need to know the make and model of the printer you are trying to map, and its IP address. If you do not have the IP address, you can go to the printer and print off the network settings. The process for doing this varies, but is usually located within the printer's settings.

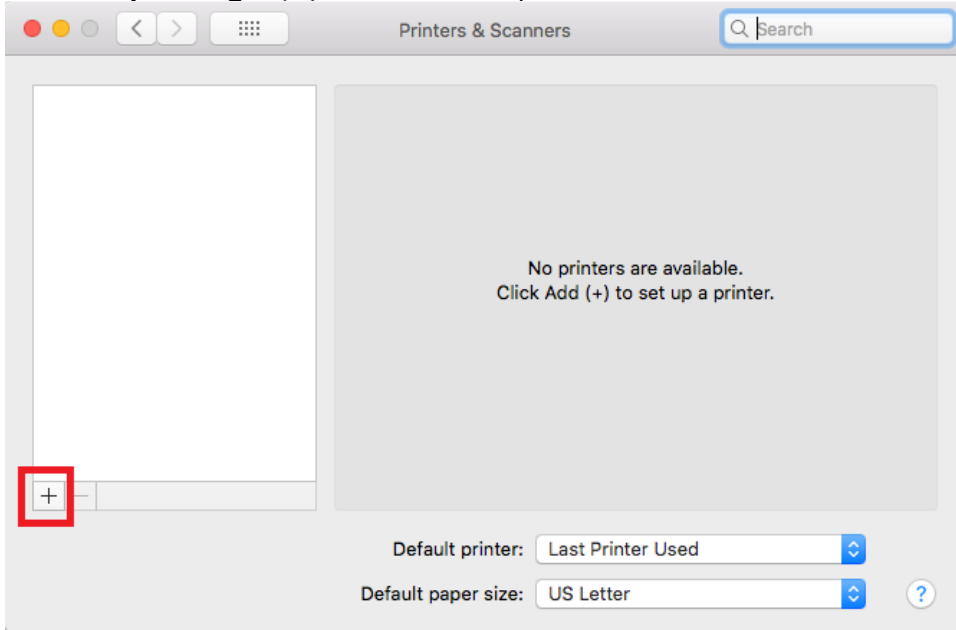
1. Go to **System Preferences** in the dock.



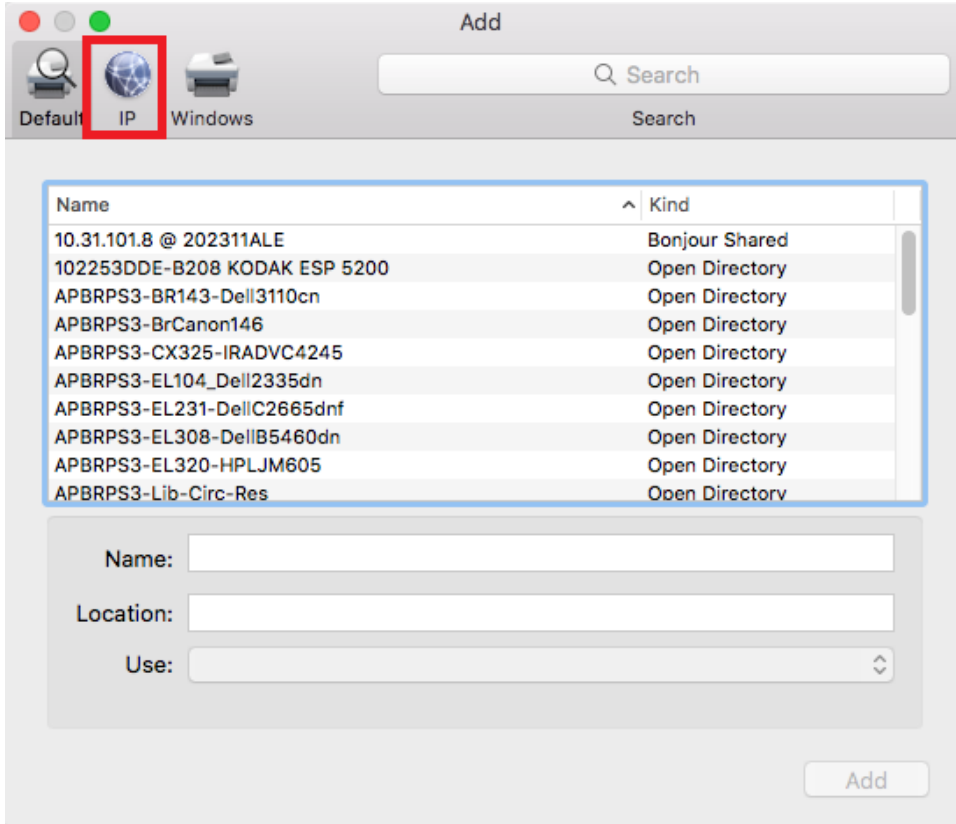
2. Click **Print & Scan**.



3. Click the **plus sign (+)** to add a new printer.



4. Click **IP**.



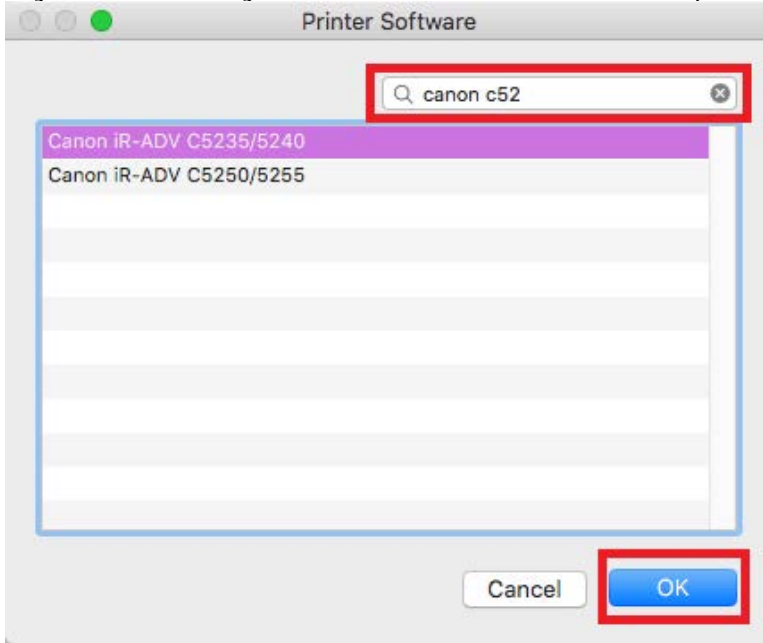
5. Input the **IP address** for the printer. Choose **Line Printer Daemon – LPD** for the protocol. Enter the printer's **name**.

The screenshot shows the 'Add' printer dialog box in macOS. The window title is 'Add'. At the top, there are three tabs: 'Default', 'IP', and 'Windows', with 'IP' selected. A search bar is located at the top right. The main area contains several fields: 'Address' with the value '10.2.101.20', a note 'Valid and complete host name or address.', 'Protocol' set to 'Line Printer Daemon - LPD', 'Queue' (empty), a note 'Leave blank for default queue.', 'Name' with the value 'printername', 'Location' (empty), and 'Use' set to 'Generic PostScript Printer'. A red box highlights the 'Address' field, another red box highlights the 'Protocol' dropdown, and a third red box highlights the 'Name' field. An 'Add' button is at the bottom right.

6. Click the dropdown beside **Use:** and choose **Select Software....**

The screenshot shows the 'Use:' dropdown menu. The options are: 'Auto Select', 'Generic PostScript Printer' (checked), 'Generic PCL Printer', 'Select Software...', and 'Other...'.

7. Search for your printer's make and model. Highlight the correct model and click **OK**. If you do not see your model listed, continue to step 8. Otherwise, skip to step 16.

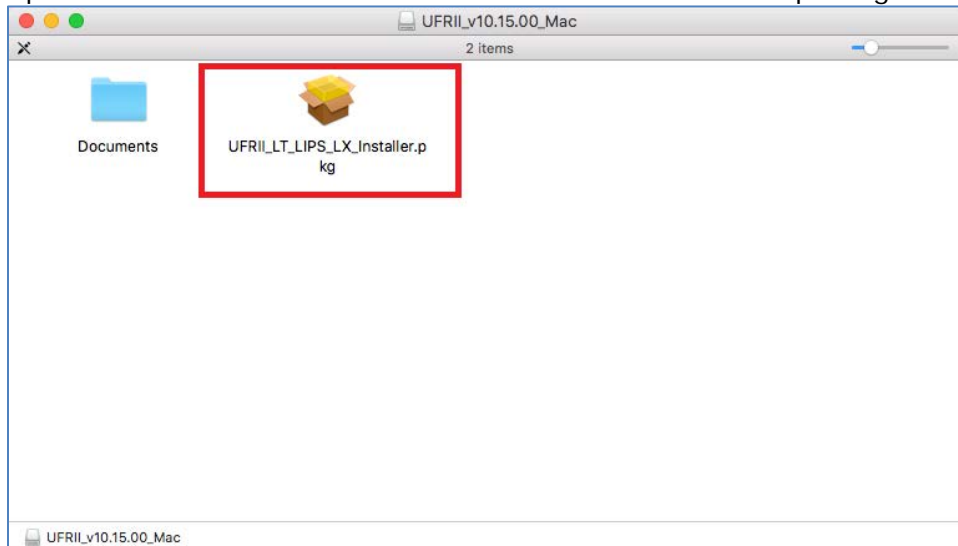


8. Search the web for the appropriate driver (eg **Canon C5240A Mac Driver**). Download the printer's driver from the manufacturer's website. If the printer is a Canon, make sure to get the **UFR II driver**.

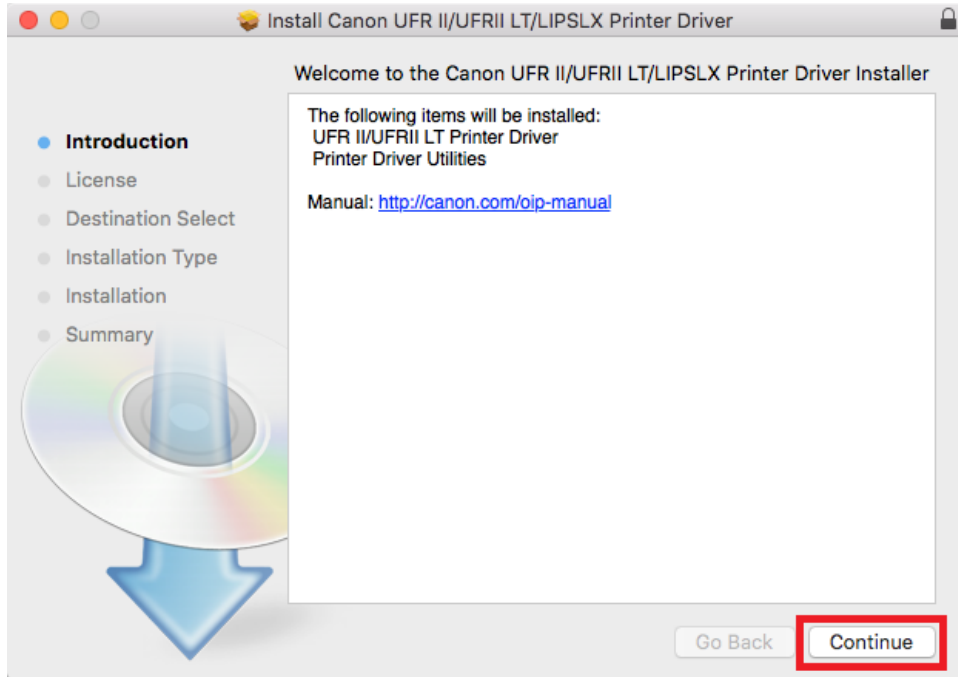
| Recommended Driver(s)    |          |           |
|--------------------------|----------|-----------|
| File Name                | Date     | File Size |
| UFR II_v10.15.00_Mac.zip | 03/19/18 | 53.3 MB   |

[SELECT](#)

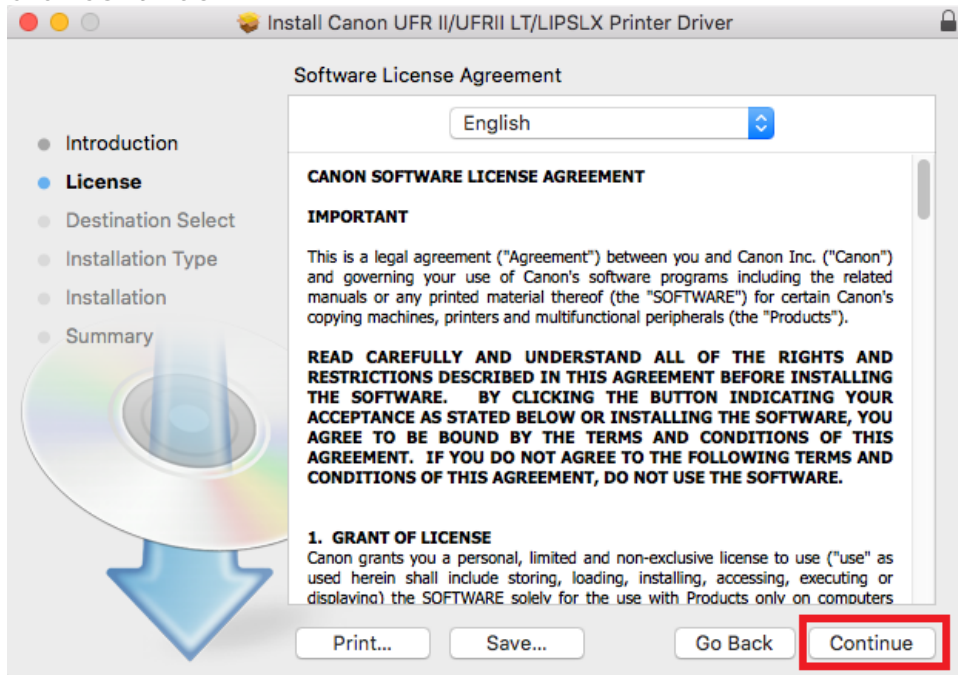
9. Open the downloaded file and double-click on the installer package.



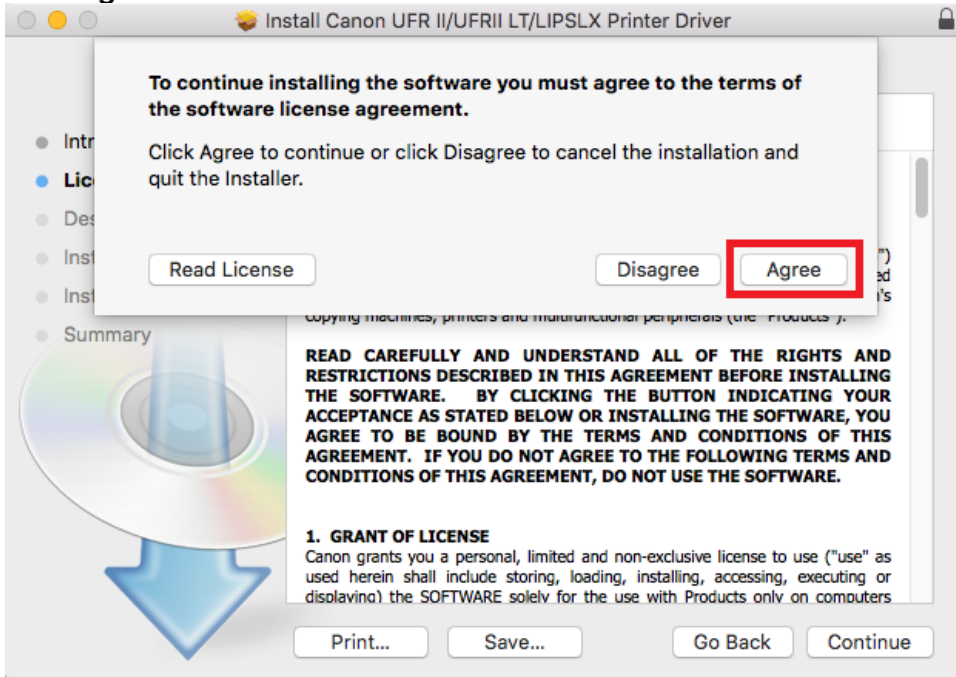
10. Click **Continue**.



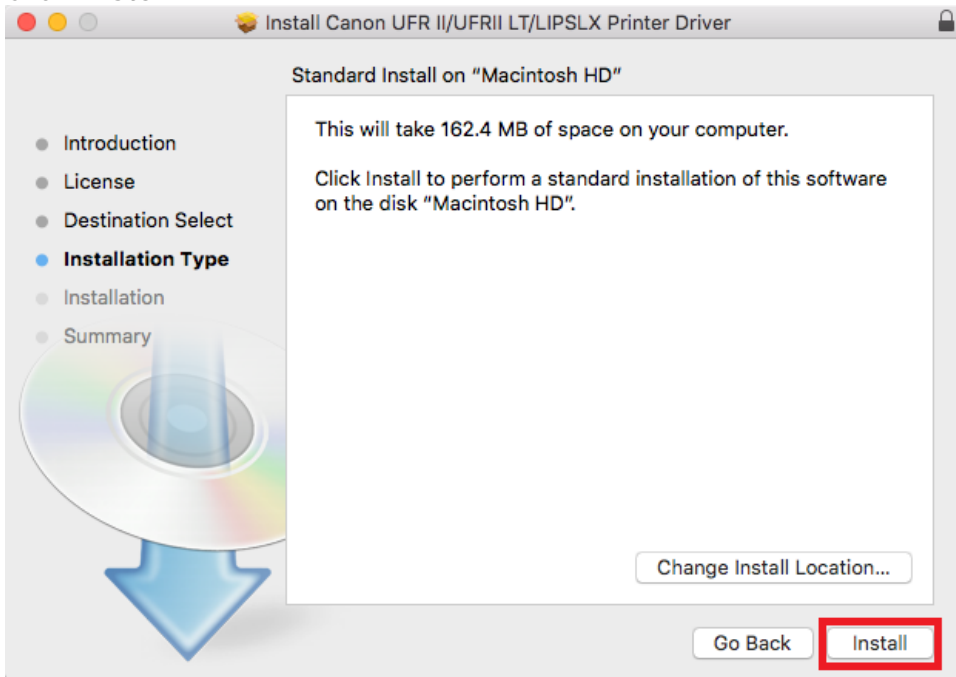
11. Click **Continue**.



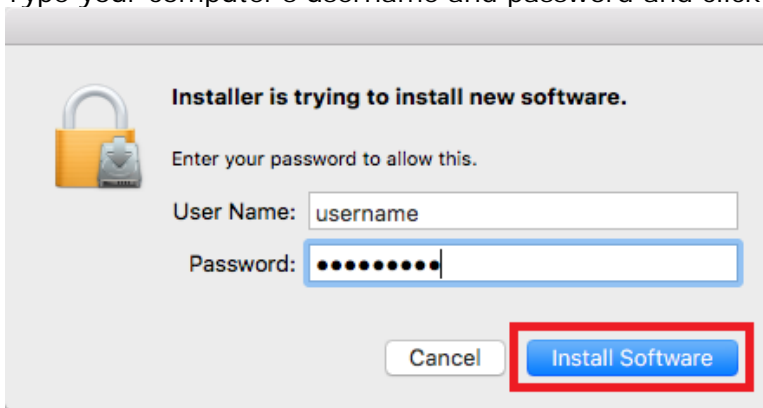
12. Click **Agree**.



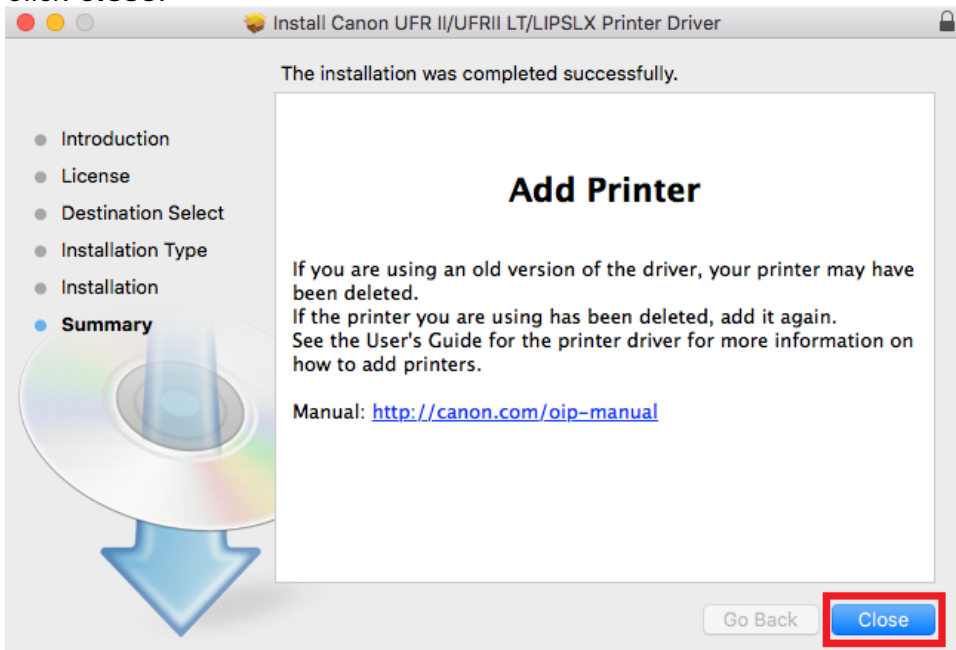
13. Click **Install**.



14. Type your computer's username and password and click **Install Software**.



15. Click **Close**.



16. Click **Add**.

Default IP Windows

Search

Search

Address: 10.2.101.20  
Valid and complete host name or address.

Protocol: Line Printer Daemon - LPD

Queue:   
Leave blank for default queue.

Name: printername

Location:   
Use: Canon iR-ADV C5235/5240

Add