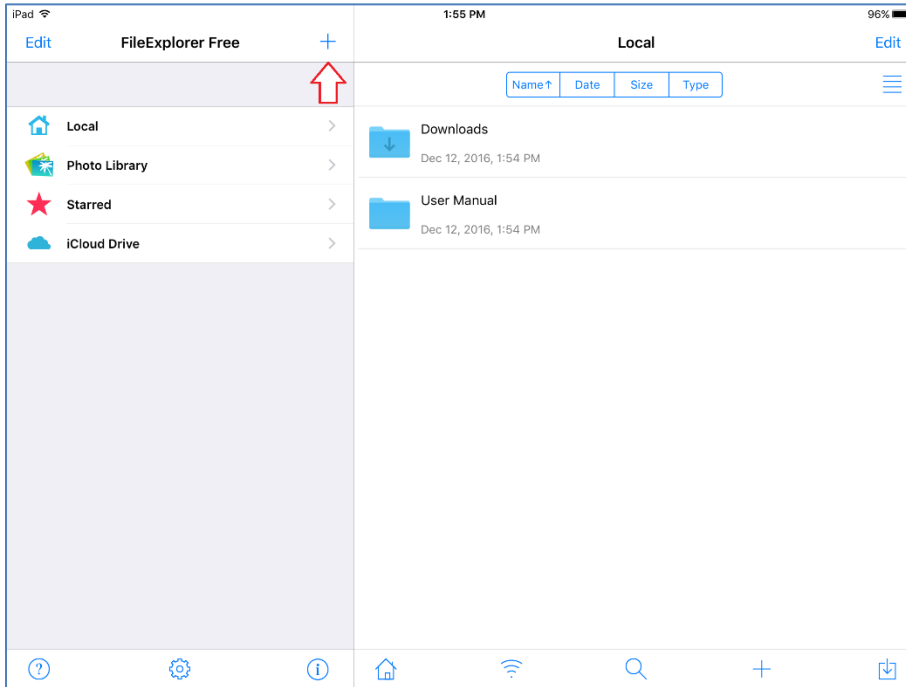
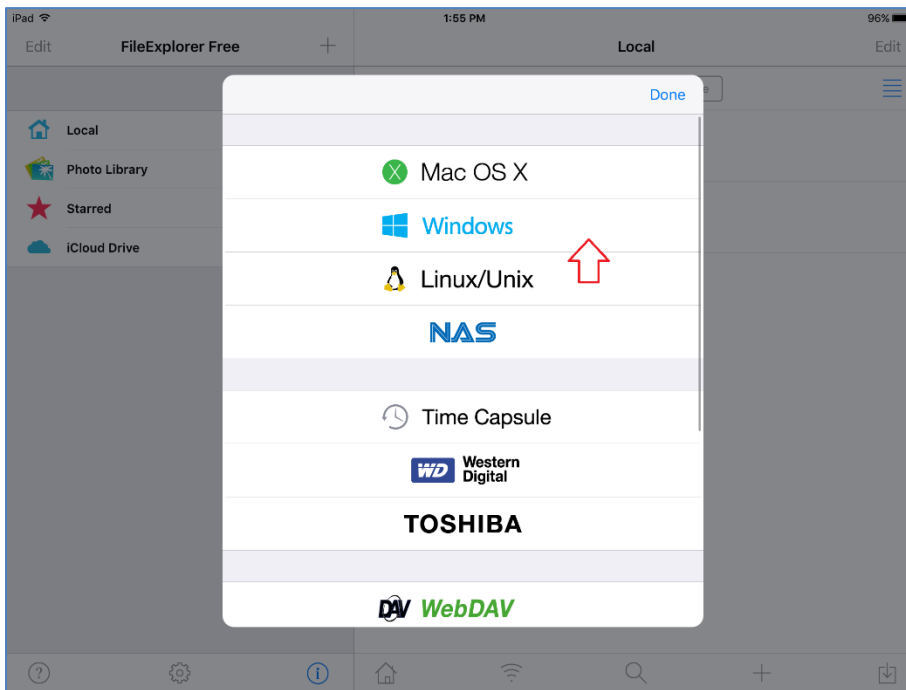


Connecting to a Share Drive (iPad, iPod Touch, iPhone):

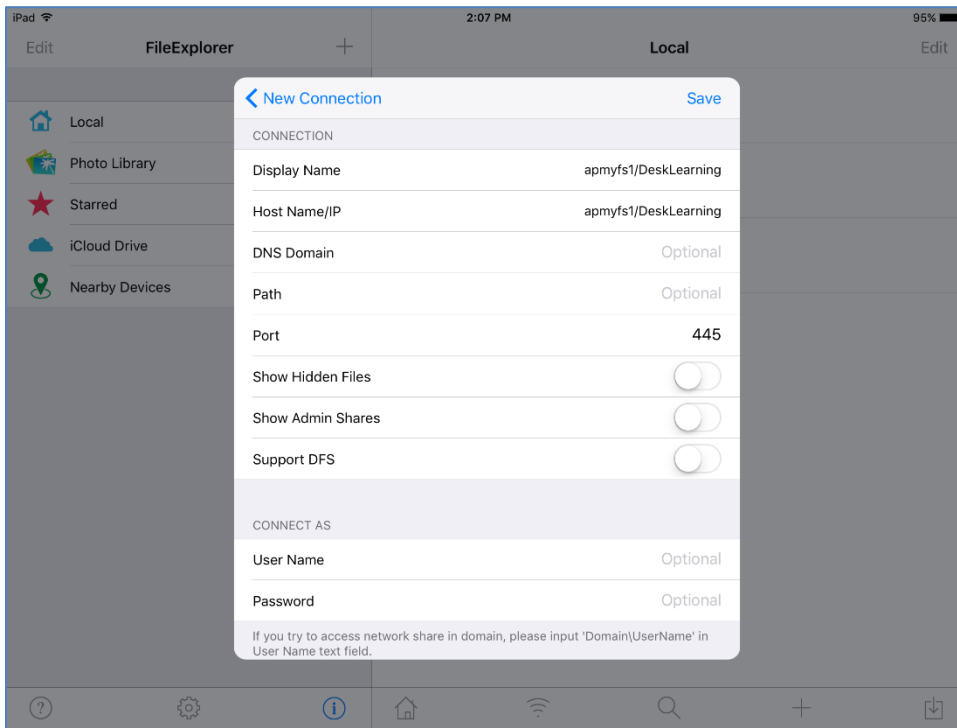
1. Install the [FileExplorer Free](#) app, available on the App Store.
2. Launch the software. Tap the **plus sign** to add a new connection.



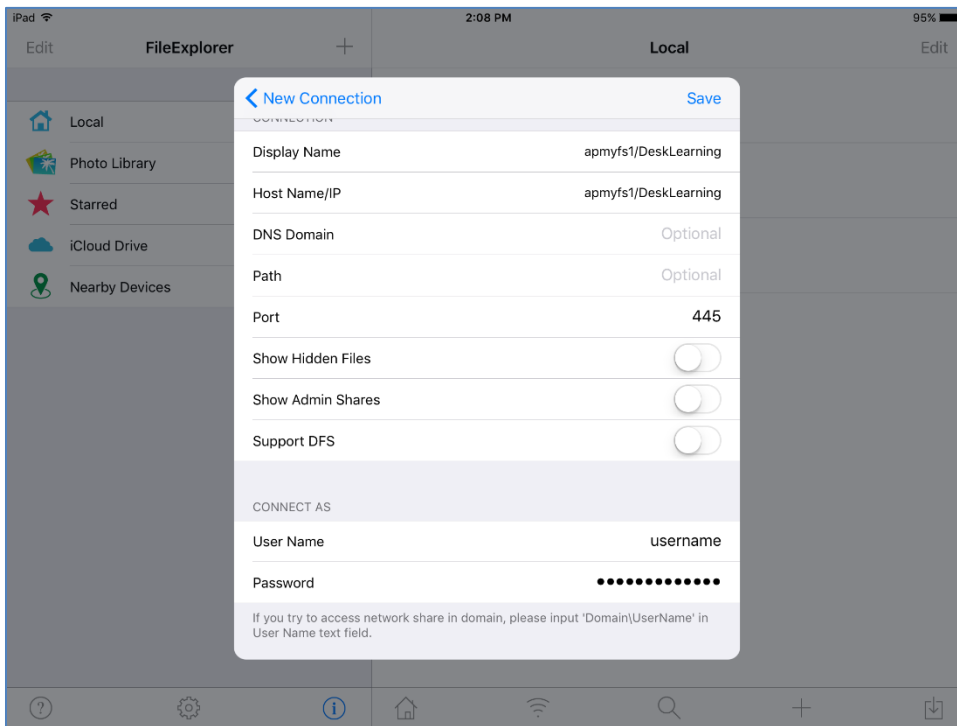
3. Tap **Windows**.



4. Input the share drive path beside **Host Name/IP**.



5. Scroll down. Input your APSU email address username and password. Tape **Save**.



6. You will now see the contents of your connected network share drive. The free version of FileExplorer allows only one connection at a time. If you need to access multiple share drives you will need to purchase the [paid version](#).

